



# SALES & ENGINEERING DATA

## 3" NON-METALLIC DIAPHRAGM PUMP (DP21)

### SPECIFICATIONS:

**Air Inlet(female):** 3/4"BSPT(3/4"NPT Available On Request)

**Fluid Outlet:** 3"PN10/PN16 Flange

**Fluid Inlet:** 3"PN10/PN16 Flange

**Maximum Flow Rate:** 275 GPM(1041 LPM)

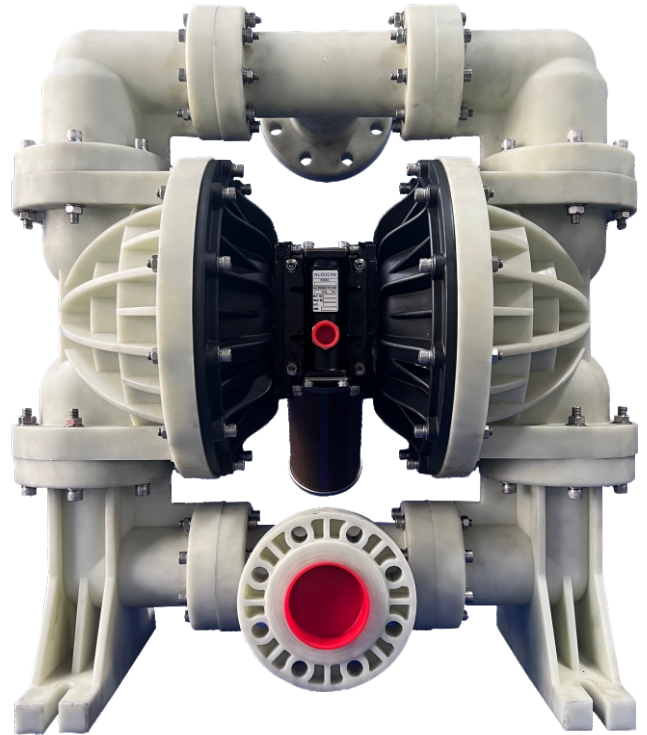
**Max. Operating Pressure:** 120psi(8.3 bar)

**Suspended Solids Max. Dia.:** 3/8"(9.4mm)

**Maximum Dry Suction Lift:** 17.6feet(5.4m)

**Weight:** PP(69kgs)

PVDF (82kgs)



### MODEL DESCRIPTION & ORDERING:

DP21	-	80	X	X	X	X	X	X	X
		Pump Size	Center Body Mat.	Fluid Caps Manifold Mat.	Seat Material	Ball Check Material	Diaphragm Material	Fluid Connections	Hardware

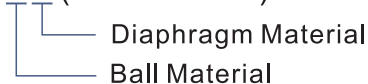
Pump Size	80-3"								
Center Body Mat.	A-Aluminum				C-Cast Iron				
Fluid Caps & Manifold Material	3-Polypropylene				4-PVDF				
Seat Material	3-Polypropylene				4-PTFE		E-Santoprene		
Ball Check Material	1-Neoprene		2-Nitrile		3-Viton		4-PTFE		
	5-EPDM		6-Acetal		7-Polyurethane		8-Stainless Steel		
	9-Hytrel		B-Santoprene						
Diaphragm Material	1-Neoprene		2-Nitrile		3-Viton		4-PTFE/Santoprene		
	5-EPDM		9-Hytrel		B-Santoprene		6-Other		
Fluid Connections	G-PN16/PN10 Flange								
Hardware	S-Stainless Steel								

### ACCESSORIES:

#### Service Repair Kits:

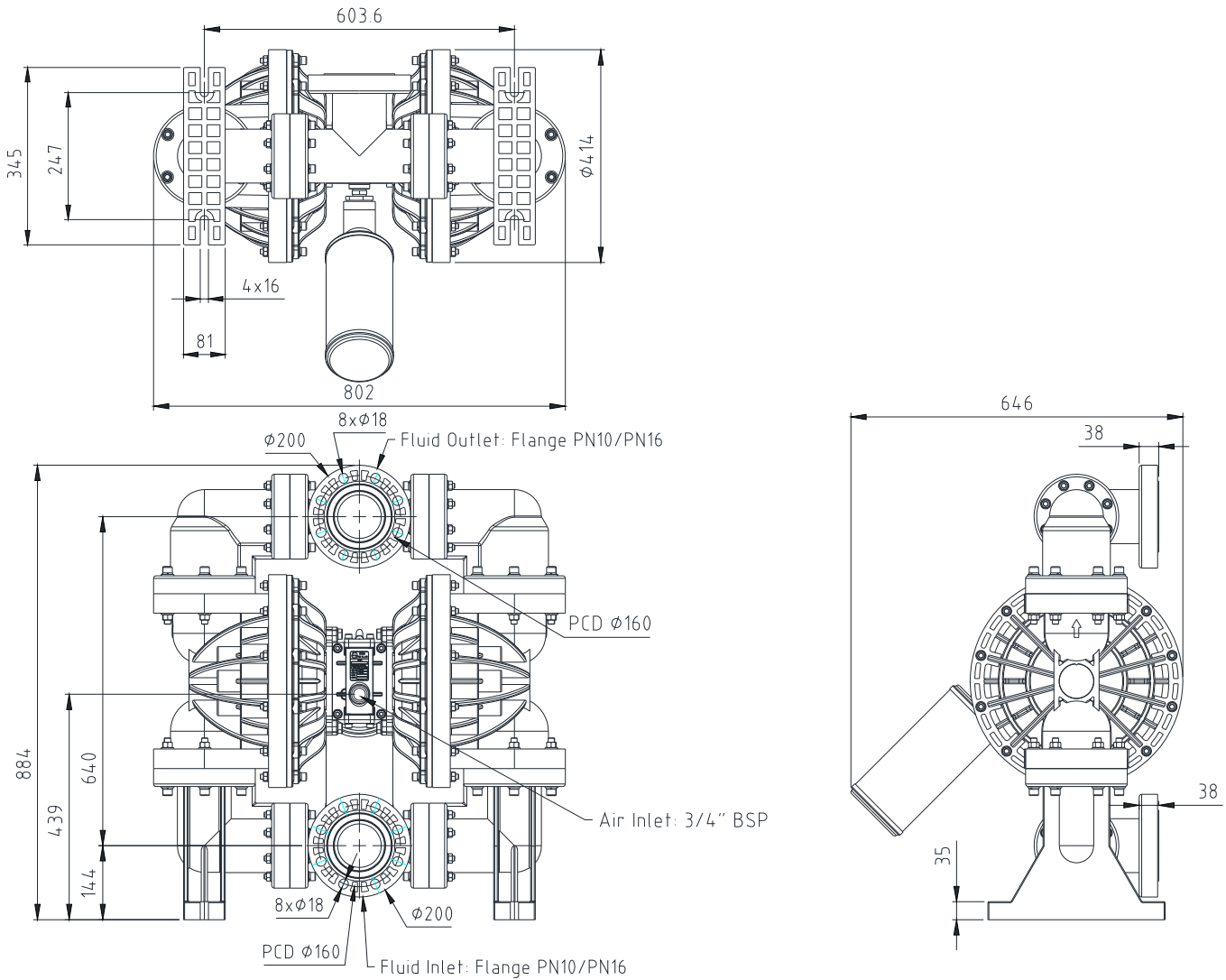
DP21-Air80(air section)

DP21-Flu80P-XX(fluid section)



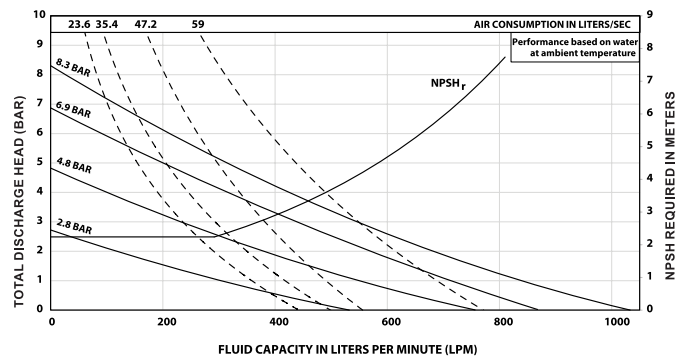
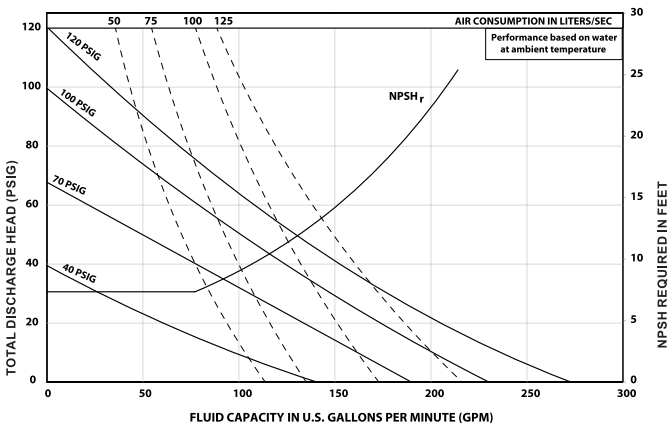
### 3" NON-METALLIC DIAPHRAGM PUMP (DP21)

## DIMENSIONS:



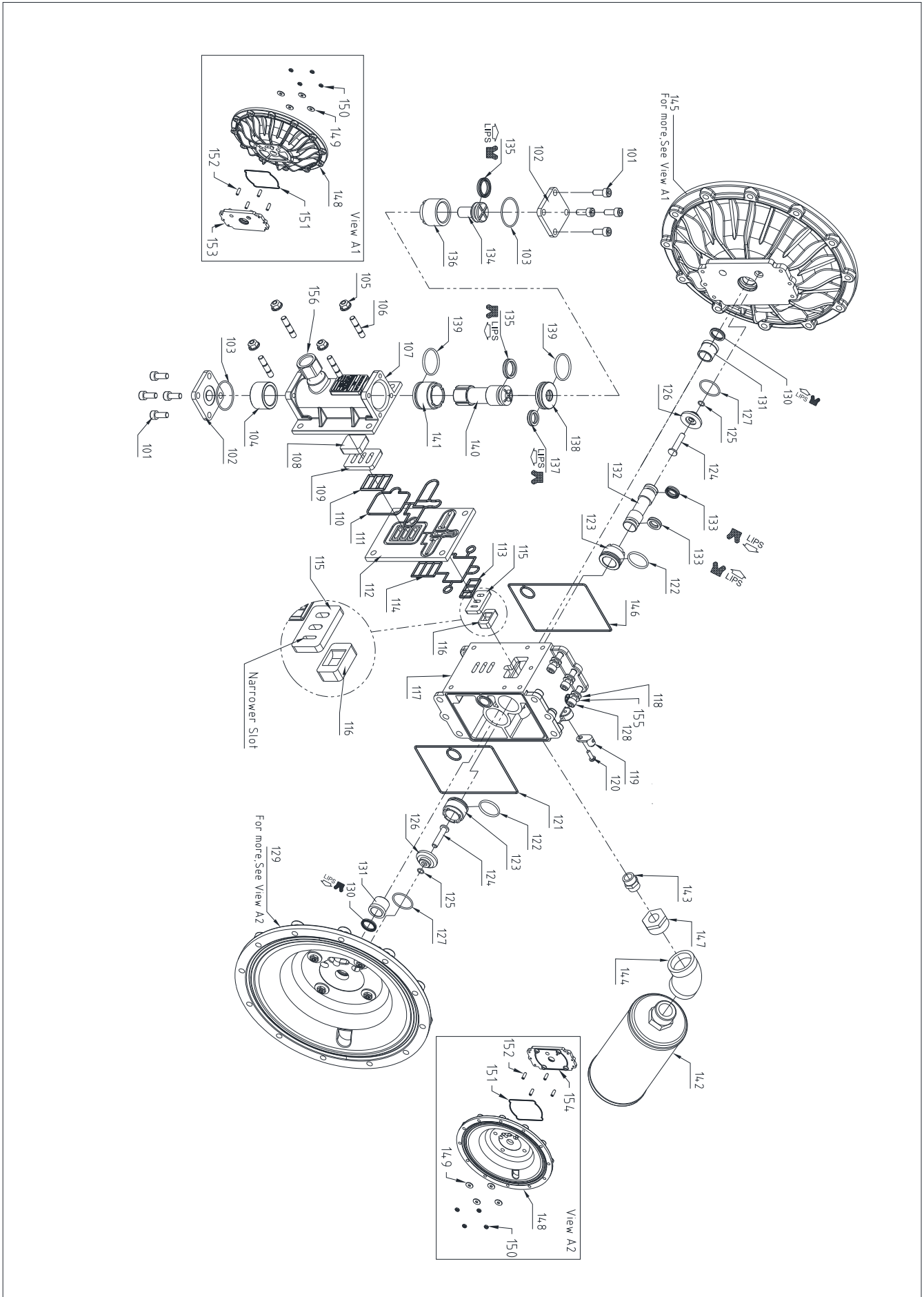
Dimensions shown are for reference only, they are displayed in millimeters (mm).

## PERFORMANCE CURVE:



### 3" NON-METALLIC DIAPHRAGM PUMP (DP21)

## Exploded View Of Air Motor Section



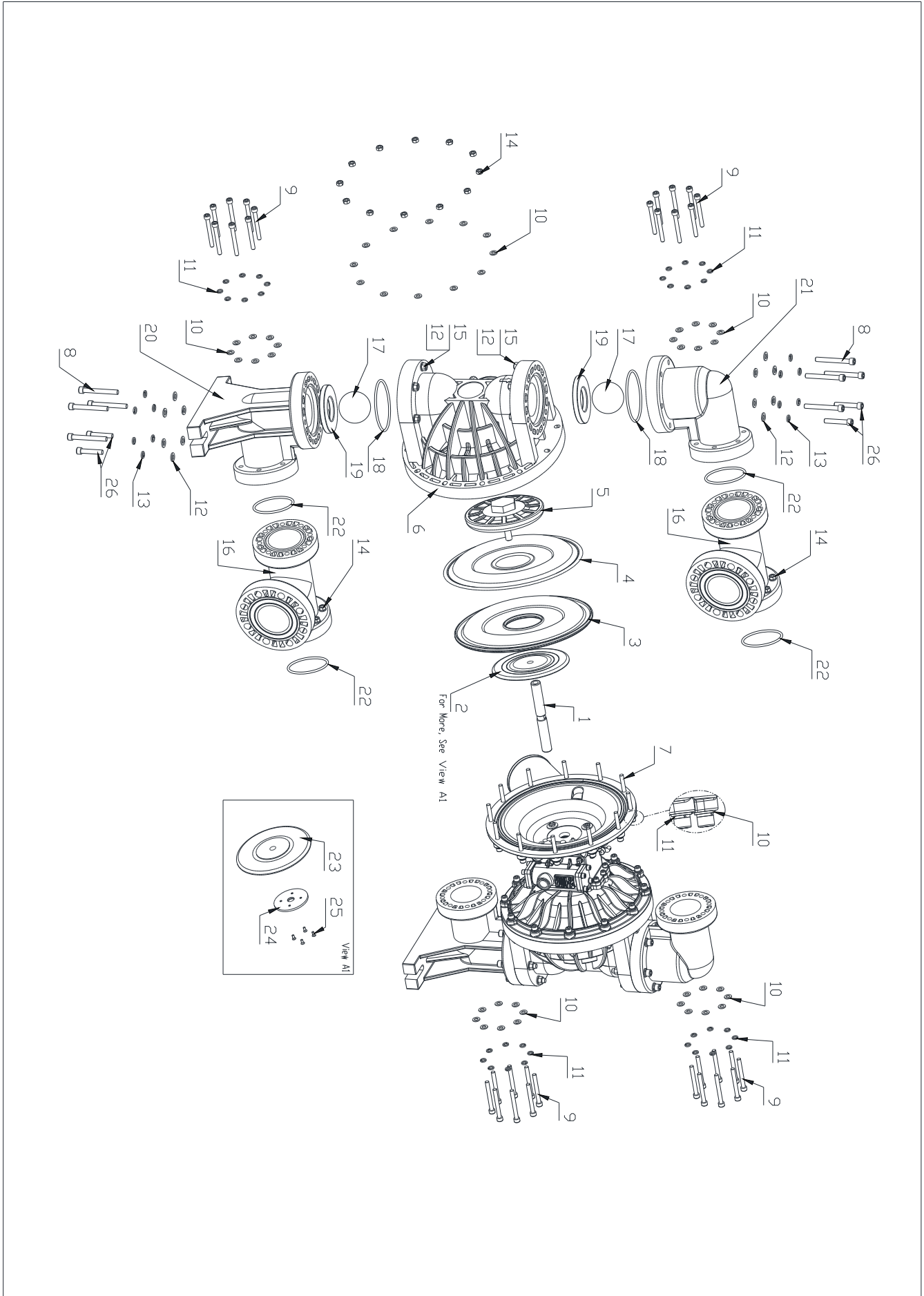


# SALES & ENGINEERING DATA

## Parts List Of Air Motor Section

Position Number	Description	Part Number	Material	Quantity
101	ScrewM8*12	NDA-PX44	Stainless Steel	8
102	Motor Cap	NDA-PJ68	Stainless Steel	2
103	O-Ring41x2.4(ID*Sec.)	NDA-PY20	Nitrile	2
104	Guide Bush1	NDA-PK85	POM	1
105	NutM8	NDA-PX12	Stainless Steel	4
106	ScrewM8*40	NDA-PX14	Stainless Steel	4
107	Air Valve Body	NDA-PI67	Aluminum	1
108	Valve Insert	NDA-PK92	Ceramic	1
109	Valve Plate	NDA-PK91	Ceramic	1
110	Gasket	NDA-PF76	Nitrile	1
111	Gasket	NDA-PF79	Nitrile	1
112	Adapter Plate	NDA-PN69	Aluminum	1
113	Gasket	NDA-PF78	Nitrile	1
114	Gasket	NDA-PF77	Nitrile	1
115	Valve Plate	NDA-PK94	Ceramic	1
116	Valve Insert	NDA-PK93	Ceramic	1
117	Pump Body	NDA-PA67	Aluminum	1
118	Plain washer8	NDA-PX22	Stainless Steel	12
119	Ground Lug	93004	Brass	1
120	ScrewM5x15	NDA-PX15	Stainless Steel	1
121	Gasket2	NDA-PF87	Nitrile	1
122	O-Ring28x2.65 (ID*Sec)	NDA-PY21	Nitrile	2
123	Guide Bush	NDA-PK96	POM	2
124	Pilot Pin	NDA-PK185	Stainless Steel	2
125	O-Ring6*1.5 (ID*Sec)	NDA-PY22	PU/NBR	2
126	Retainer Ring	NDA-PK133	Brass	2
127	O-Ring28x2.65 (ID*Sec)	NDA-PY21	Nitrile	2
128	ScrewM8*25	NDA-PX109	Stainless Steel	12
129	Right inner cover assembly	NDA-PB126	Consists of No. 148, 149, 150, 151, 152, and 154	1
130	Y Type Seal36x26x4.5	NDA-PW27	Nitrile	2
131	Bush	NDA-PG70	POM	2
132	Slider	NDA-PK95	POM	1
133	Y Type Seal14x22x4.5	NDA-PW23	Nitrile	2
134	Shaft	NDA-PK88	POM	1
135	Y Type Seal30x22x4.5	NDA-PW24	Nitrile	2
136	Bush	NDA-PK87	POM	1
137	Y Type Seal24x16x4.5	NDA-PW25	Nitrile	1
138	Retainer Ring	NDA-PK89	POM	1
139	O-Ring36.5x2.65(ID*Sec)	NDA-PY24	Nitrile	2
140	Motor spindle	NDA-PK86	POM	1
141	Guide Bush2	NDA-PK90	POM	1
142	Muffler	67389 (XY-15)		1
143	3/4Nipple	NDA-PN101	Malleable iron	1
144	45°Elbow (inner wire 1-1/2 "at one end and 1-1/2" at the other end)	NDA-PN103	Malleable iron	1
145	Left inner cover assembly	NDA-PB127	Consists of No. 148, 149, 150, 151, 152, and 153	1
146	Gasket1	NDA-PF86	Nitrile	1
147	Bushing (outer wire 1-1/2 ", inner wire 3/4 ")	NDA-PN104	Malleable iron	1
148	Air Cap	NDA-PB125	Aluminum	2
149	Plain washer10	NDA-PX110	Stainless Steel	8
150	NutM10	NDA-PX111	Stainless Steel	8
151	Gasket	NDA-PY52	Nitrile	2
152	ScrewM10*30	NDA-PX112	Stainless Steel	8
153	Left adapter board	NDA-PB124	Aluminum	1
154	Right adapter board	NDA-PB123	Aluminum	1
155	Standard spring washer8	NDA-PX123	Stainless Steel	12
156	Air intake adapter	NDA-PU05	Stainless Steel	1

## Exploded View Of Fluid Section





# SALES & ENGINEERING DATA

## Parts List Of Fluid Section

Position Number	Description	Part Number	Material	Quantity
1	Rod	NDA-PD83	Stainless Steel	1
2	Inner splint assembly	NDA-PH90	Consists Of No.23, No.24, and No.25	2
3	Backer Diaphragm	NDA-PL68	Santoprene	2
4	Diaphragm	NDA-PL69	PTFE	2
		NDA-PL70	Santoprene	2
5	Washer ( Fluid Side )	NDA-PH91	PP	2
		NDA-PH92	PVDF	2
6	Fluid Cap	NDA-PB128	PP	2
		NDA-PB129	PVDF	2
7	BoltM10x80	NDA-PX113	Stainless Steel	24
8	BoltM12x100	NDA-PX114	Stainless Steel	16
9	BoltM10x90	NDA-PX115	Stainless Steel	32
10	Plain washer10*24*2	NDA-PX116	Stainless Steel	112
11	Standard spring washer10	NDA-PX117	Stainless Steel	56
12	Plain washer12	NDA-PX118	Stainless Steel	40
13	Standard spring washer12	NDA-PX119	Stainless Steel	24
14	NutM10	NDA-PX120	Stainless Steel	56
15	NutM12	NDA-PX121	Stainless Steel	16
16	Flange	NDA-PC184	PP	2
		NDA-PC185	PVDF	2
17	Ball	NDA-PM72	PTFE	4
		NDA-PM73	Santoprene	4
18	O-ring	NDA-PS204	PTFE	4
		NDA-PS205	Viton	4
19	Seat	NDA-PE95	PTFE	4
20	Inlet Manifold	NDA-PC186	PP	2
		NDA-PC187	PVDF	2
21	Outlet manifold	NDA-PC188	PP	2
		NDA-PC189	PVDF	2
22	O-ring	NDA-PS207	PTFE	4
		NDA-PS208	Viton	4
23	Washer	NDA-PH89	Aluminum	2
24	Plate	NDA-PK186	45#	2
25	BoltM5x12	NDA-PX122	Stainless Steel	8
26	BoltM12x70	NDA-PX124	Stainless Steel	8