

## 1-1/2" WB NON-METALLIC Models

### MODEL: WB15X-XXS-XXX

#### SPECIFICATION:

Ratio:	1:1		
Maximum GPM (LPM):	123 (465)		
Displacement per cycle Gallons (Liters):	0.617 (2.34)		
Air Inlet (Female):	1/2 - 14 N.P.T.		
Fluid Inlet/Outlet:	1-1/2" A.N.S.I./DIN flange (side or center)		
Max. operating pressure psi (bar):	120 (8.3)		
Suspended solids max. dia. in. (mm):	1/4" (6.4)		
Weight lbs (kg):	Polypropylene, Side Ported	42.6	(19.3)
	PVDF, Side Ported	63.9	(29)
Maximum dry suction lift ft (m) :	14 (4.2)		
Sound Level:	70 PSI	60 Cycles / Min	81.0 db(A)



#### MODEL DESCRIPTION & ORDERING:

Position	1	2		3	4	5		6	7	8			
Example:	<b>WB15</b>	<b>X</b>	-	<b>X</b>	<b>X</b>	<b>S</b>	-	<b>X</b>	<b>X</b>	<b>X</b>	-		

Position 1 Model Series	Position 2 Center Section	Position 3 Connections	Position 4 Wetted Parts	Position 5 Hardware	Position 6 Seat Material	Position 7 Ball Material	Position 8 Diaphragm Material
WB15 - Standard Pump	E - Conductive Polypropylene P - Polypropylene	F - 1-1/2" A.N.S.I./DIN Flange (Side)	E - Conductive Polypropylene* K - PVDF P - Polypropylene	S - SS	H - 440 SS (Hard) K - PVDF P - Polypropylene S - 316 SS	A - Santoprene® C - Hytrel® G - Nitrile S - 316 SS T - PTFE V - Viton®	A - Santoprene® C - Hytrel® G - Buna-N L - Long-Life PTFE M - Medical Grade Santoprene® T - PTFE/Santoprene® V - Viton®

Hytrel® and Viton® are registered trademarks of the DuPont company. Santoprene® is a registered trademark of Monsanto Company, licensed to Advanced Elastomer Systems, L.P.

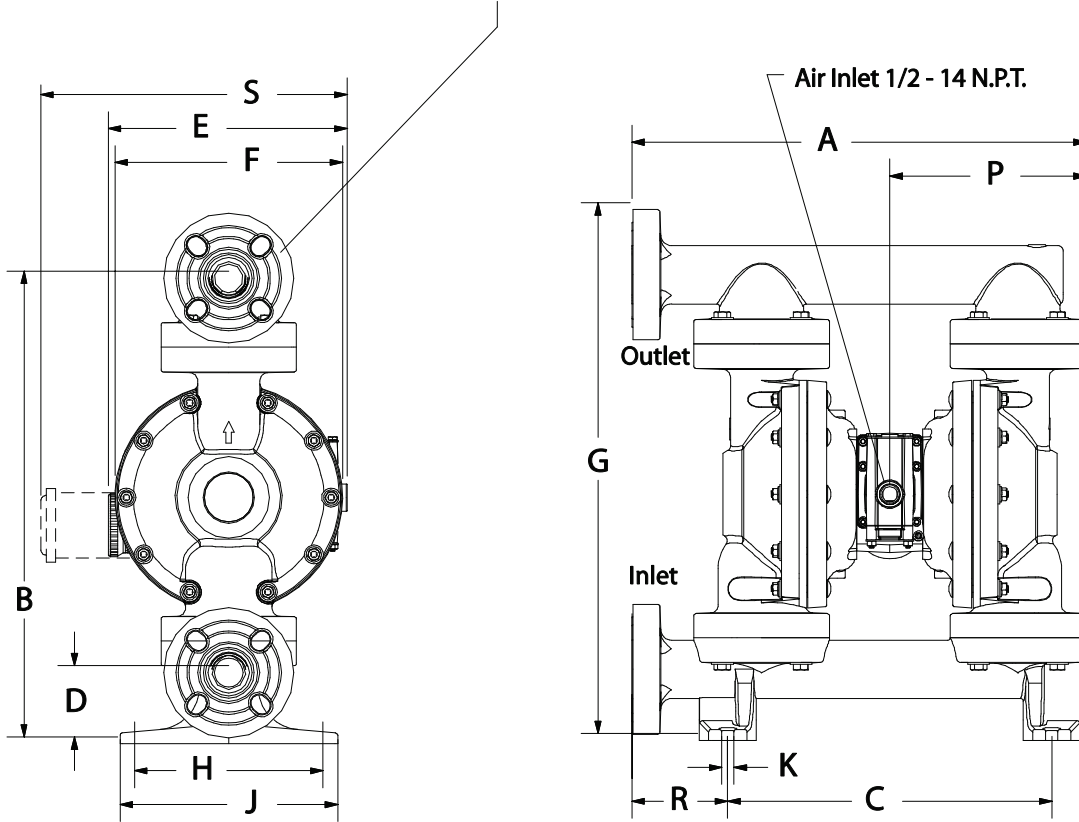
#### Accessories

- Service Repair Kits:**  
**AIR MOTOR FOR WB15P: WB637389;**  
**FLUID SECTION: WB637391-XX;**  
**MAJOR AIR VALVE ASSEMBLY: WB637390-X;**

## 1-1/2" WB NON-METALLIC Models MODEL: WB15X-XXS-XXX

### DIMENSIONS:

1-1/2" A.N.S.I. / DIN Flange



- S: 14-1/8" (358.5mm)
- E: 11" (279.5mm)
- F: 10-1/2" (266.3mm)
- D: 2-11/32" (59.4mm)
- B: 21-15/32" (545.3mm)
- D: 3-9/32" (83.3mm)
- H: 8-11/16" (220.7mm)
- J: 10-1/32" (254.8mm)

- A: 20-15/16" (531.6mm)
- P: 9-1/32" (229.5mm)
- G: 24-15/32" (621.5mm)
- K: 9/16" (14.3mm)
- R: 4-7/16" (112.4mm)
- C: 14-15/16" (379.4mm)

### PERFORMANCE CURVE:

